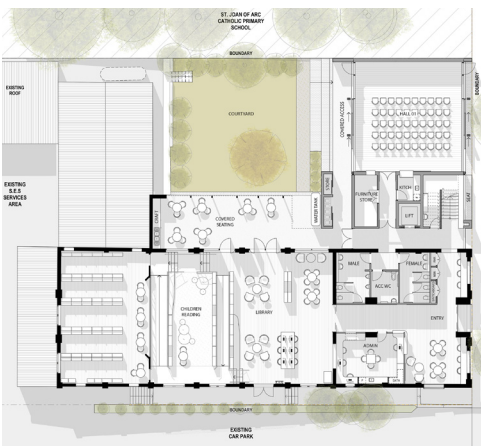


Haberfield Library and Community Hall Inner West Council



The Haberfield Library and Community Rooms was formally the Haberfield School of Arts c1912, designed by J Spencer Stansfield in the 'Federation Free Classical Style'. Ashfield Municipal Council bought the building in 1964 to establish a branch library.

The building underwent a number of refurbishments over the years, the most recent and significant change occurred in 1986-87 with the design by Tanner & Associates. This alteration involved a new northern addition and entry to the street, making the original School of Arts entry redundant. A new ground level public hall was established in the original entry wing, which resulted in some compromise to the internal planning and engagement with the street.

The project brief was for the significant upgrading of the Haberfield Centre, comprising community rooms, library and garden, including a new lift to provide equitable access to the Level 1 community room, and a new mechanical air-conditioning system. Additional floor area was not a requirement of the brief, though improvements were sought to the layout and configuration of the spaces, as well as engagement to the street, with a desire that the refurbishment may foster precinct activation.

Along with increased transparency of the public functions and activities to the street, one of our main drivers was to maximise the Civic frontage and address. A new street facing double-height Hall sits alongside the library, forming a landscaped courtyard that can be shared between Library and Community Hall functions. Both sides of the hall open up, so through access is possible from the street to the courtyard, allowing the facility to open up to the street on open days, or events like the Haberfield Festival.

Open and engaging to Dalhousie Street, the new Haberfield Centre and Library refurbishment looks to re-establish the library's community address and original School of Arts entry and reinforce its civic presence. The new works do not try to mimic Haberfield's famous Federation-era architecture, but show respect through the use of warm face brickwork and craft-based detailing.



Client:	Inner West Council
Country:	Eora Nation
Location:	Haberfield, NSW
Project Value:	\$5 Mil
Completed:	2021